

CTRLPA 肯卓

ACOUSTIC PRECAUTION,  
USING SOUND TO BUILD A SAFETY DEFENSE LINE

# TRAFFIC SAFETY EMERGENCY INTENSE SOUND WARNING SYSTEM

LONG-RANGE WARNING AND TIMELY DISPOSAL



SAFETY & EMERGENCY



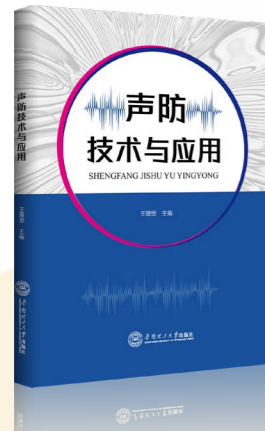
INTENSE SOUND FOR  
MIL. AND POLICE

## INTERNAL INFORMATION

This document is copyrighted by Guangzhou Shengxun Electronic Technology Co., Ltd.  
Without permission, it is prohibited to photocopy or duplicate in any form.  
In case of any changes, no further notice will be given.

GUANGZHOU SHENGXUN ELECTRONIC TECHNOLOGY CO., LTD.  
SPECIALIZED IN ACOUSTIC PRECAUTION  
IN MIL., POLICE AND EMERGENCY APPLICATION

## CTRLPA PROFILE



Guangzhou Shengxun Electronic Technology Co., Ltd., focusing on acoustic precaution in mil., police and emergency applications, master the core electroacoustic transducer technology of acoustic precaution device, and deeply cultivate the R&D and market application exploration of acoustic precaution technology. As of now, we have over 300 intellectual property rights and have written and published the first domestic guide book on acoustic precaution technology applications - Acoustic Precaution Technology and Applications.

The enterprise has been shortlisted for the Police Equipment Procurement Center of the Ministry of Public Security, and shortlisted in the list of Typical Cases for the Application and Promotion of Safety and Emergency Equipment in 2024 released by the Ministry of Industry and Information Technology of the People's Republic of China, awarded as a national high-tech enterprise, a "specialized, sophisticated, unique, and novel" small and medium-sized enterprise, and selected as a "hidden champion" enterprise on the list in Guangzhou. It passed certifications such as quality management system, environmental management system, occupational health and safety management system, intellectual property management system, after-sales service certification, and national mil. standard quality management system; obtained the qualification certificate for security engineering enterprises, the design, construction and maintenance ability certificate for security engineering enterprises, and the ability evaluation certificate for system integration and service enterprises. The product has passed third-party certifications such as the Testing Center of the Ministry of Public Security, the Fifth Research Institute of the Ministry of Industry and Information Technology, and the China Ordnance Equipment Research Institute.

The enterprise has won the Guangdong Province Excellence Award in the China Innovation & Entrepreneurship Competition, the Excellent Award, the Second Prize and the Industrialization Potential Award in Safety Emergency and Health Environmental Protection Special Competition in The 11th Guangdong Governor Cup Industrial Design Competition of Guangdong Province, and first place in the 2021 Guangzhou Baiyun District "Baiyun Creation Cup" Innovation and Entrepreneurship Competition and so on. It has been rated as a trustworthy small and medium-sized enterprise in Guangzhou for five consecutive years, a contract abiding and trustworthy enterprise in Guangdong Province for four consecutive years, and it has been awarded the A-level tax credit honor certificate for six consecutive years.

## ACOUSTIC PRECAUTION TECHNOLOGIES AND EQUIPMENT >>>

The enterprise has an independent research and development base, having a research and development team with rich experience in the field of intense sound, on this basis, a series of mature and stable acoustic precaution devices have been developed, which can achieve the effects of hailing and warn, intense sound deterrence, and sound wave strike on the target audience. The sound have the characteristics of intense, directional, high-definition, and long-range, the devices all comply with the relevant testing regulations of the national mil. standard, and the technical indicators have reached the advanced level at home and abroad, with a wide range of practical value.



The products are widely used in various projects such as on expressways, inside and outside tunnels, for anti-collision of bridges, on road safety law enforcement vehicles, and on the spot of expressway accident handling and road maintenance. They play an important role in providing intense sound safety warnings, commands and prompts in those projects, effectively reducing the incidence of traffic accidents on the applied road sections and ensuring the personal safety of road safety workers.

# ENTERPRISE QUALIFICATIONS

Drafting unit of the Ministry of Public Security industry standard about "General specification for portable megaphone"

Drafting unit of Guangzhou local standard about "Access specification for terminal equipment of emergencies early warning broadcasting system"

The leading drafting unit of group standard about "Specification of portable directional intense sound system for emergency"

Drafting unit of group standard about "Family emergency kit"

Drafting unit of group standard about "Specification for quality credit assessment of organization providing safety and emergency service"

Drafting unit of group standard about "Setting and technical requirements of intelligent control system for urban tunnel entrance"

Drafting unit of group standard about "Technical specification for intelligent traffic safety control of expressway tunnels"

Drafting unit of group standard about "General technical requirements for on-site monitoring and early warning of forest and grassland fire fighting"

Drafting unit of group standard about "Technical specification for sea area collaborative joint prevention and control system"

National High-tech Enterprise

Shortlisted Enterprise of Procurement Center for Police Equipment of Ministry of Public Security

Shortlisted Enterprise of "List of Typical Cases for the Application and Promotion of Safety and Emergency Equipment in 2024" by Ministry of Industry and Information Technology

Specialized and sophisticated enterprise that produce novel and unique products

Innovative SMEs in Guangdong Province

Hidden Champion Enterprise of Guangzhou

Vice-President Unit of Guangdong Intelligent Transportation Association

Vice-President Unit of Guangdong Industry Association of Emergency Management

Vice-President Unit of Guangdong Association of Emergency

Council Unit of Guangdong Public Security & Protection Technology Association

Vice-director unit of emergency supply chain office of China Association for Disaster Prevention

Research Center for NLW Technological Innovation (Engineering University of PAP)

Guangdong-Hong Kong-Macao Police Service Model Innovation Research Center (China People's Police University)

Collaborative Innovation Center of NLW Technology and Application (China People's Police University/Guangzhou)

Emergency Intense Sound Technology Research, Development and Industrialization Base (Guangdong Industry Association of Emergency Management)

# CONTENTS

**01** ADVANTAGES OF ACOUSTIC PRECAUTION TECHNOLOGIES AND EQUIPMENT IN TRAFFIC SAFETY APPLICATIONS

**03** WHY DO WE NEED ACOUSTIC PRECAUTION TECHNOLOGIES AND EQUIPMENT FOR ENSURING TRAFFIC SAFETY?

**05** ACOUSTIC PRECAUTION TECHNOLOGIES AND EQUIPMENT AIM TO SOLVE PAIN POINTS IN TRAFFIC SAFETY

**07** INTELLIGENT INTENSE SOUND EARLY WARNING SYSTEM FOR TRAFFIC SAFETY

**11** INTENSE SOUND EARLY WARNING AND COMMAND EQUIPMENT FOR TRAFFIC SAFETY

**13** INTELLIGENT PORTABLE SOUND INTENSIFIER FOR EARLY WARNING

**19** APPLICATION CASES

# ADVANTAGES OF ACOUSTIC PRECAUTION TECHNOLOGIES AND EQUIPMENT IN TRAFFIC SAFETY APPLICATIONS

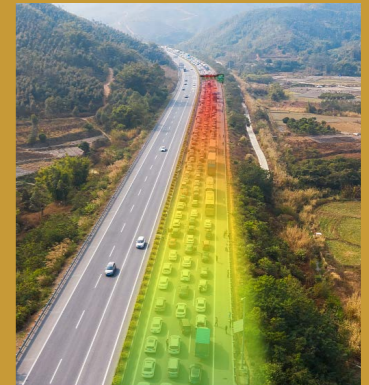
## WHAT IS ACOUSTIC PRECAUTION?

Acoustic precaution is a method that influences the human body through sounds of specific frequencies and intensities, thereby guiding and controlling human behaviors. "Acoustic precaution" equipment is a NLW and also an efficient intense sound publicity and command system. In the fields of police and safety emergency, it can achieve the usage effects of being clearly audible, mobilizing easily and controlling firmly. Besides enabling sound to play the role of publicity, it can also exert the management and control function in the ways of dispersing and deterring, building a safety defense line with sound.



**Acoustic precaution technologies and equipment demonstrate significant advantages on expressways, mainly reflected in the following aspects:**

Firstly, acoustic precaution technology can enhance the penetrability of sound, enabling it to transmit to longer distances. It can overcome the noise interference on expressways and also improve the clarity of the sound at the same time.



Secondly, acoustic precaution technology is capable of adjusting the transmission direction and range of sound according to actual needs, achieving more precise information transmission. Moreover, it won't spill over outside the lanes and cause interference to the surrounding residential areas.



Finally, acoustic precaution technology can also be used for traffic control and guidance, publicity and education, etc.. It can guide vehicles to drive in an orderly manner, broadcast traffic safety publicity information, and raise the public's awareness of traffic safety.

## WHY DO WE NEED ACOUSTIC PRECAUTION TECHNOLOGIES AND EQUIPMENT FOR ENSURING TRAFFIC SAFETY?

Vehicles, boats and pedestrians passing on various roads, waters and bridges often lack sufficient early warning mechanism protection. With insufficient anticipation of potential dangers ahead, drivers can easily get into dangerous situations without being aware. Especially under the influence of bad weather, the probability of traffic accidents increases significantly. It also makes accident handling more difficult, prolongs the rescue time and raises the probability of secondary accidents.

Directional sound intensifiers and acoustic precaution systems can efficiently realize rapid handling and timely intervention of traffic accidents on expressways, issue warnings and dynamic warning information in bad and extreme weather, and perform various road reminder functions such as anti-fatigue driving reminders and other safety warnings. Transmitting warning information to each driver in a simple, quick and effective way is an important symbol of the informatization, intelligence and digitalization construction of expressways.



### INTENSE SOUND

The maximum sound pressure level of a single piece of equipment can reach above 140 dB.

### DIRECTIONAL TRANSMIT

The sound has strong directivity and can precisely amplify sound into specific lanes.

### HIGH DEFINITION

It emits clear sound and accurately conveys voice information.

### LONG RANGE

It can achieve a sound transmission distance that ordinary sound amplification equipment cannot reach.

### ABLE TO PENETRATE CAR WINDOWS

Even with car windows closed, it can still enable people inside the vehicles to hear the warning information.

### IN OPEN AREAS, THE TRANSMISSION OF THE ALARM SOUND REACH 1000 METERS ABOVE

Enabling ultra-long-distance safety early warnings and instantly alarming the safe following distance between cars.

Intense sound waves penetrate car windows and give a compulsory warning.

Create all-round and integrated "acoustic precaution" solutions for traffic safety command and early warning.

# ACOUSTIC PRECAUTION TECHNOLOGIES AND EQUIPMENT AIM TO SOLVE PAIN POINTS IN TRAFFIC SAFETY



01

Under the current standard, the layout requirement of expressway sound amplification equipment is to install one set ordinary amplification equipment every 50 meters, which fails to achieve the purpose of remotely warning and reminding vehicles on the road.



## Solutions of Acoustic Precaution Technologies and Equipment

Intense sound technology can penetrate car windows and give safety prompts to drivers and passengers at a distance of 300 meters.

## Solutions of Acoustic Precaution Technologies and Equipment

Precision directional sound amplification technology significantly reduces sound refraction and reflection in tunnels, and the high-definition audio transmission mode ensures clear and smooth sound quality.



In tunnels, the sounds of multiple loudspeakers have different delays. Coupled with severe sound refraction and reflection in the semi-enclosed space, multiple sounds overlap, resulting in sound reverberation and finally making the sound heard by drivers and passengers muddy and unclear.

02

03

Sudden situations such as landslides, falling rocks, collapses and various traffic accidents occur from time to time. If there is a lack of emergency warning measures in the surrounding area, new traffic accidents are extremely likely to happen.



## Solutions of Acoustic Precaution Technologies and Equipment

Vehicle-mounted early warning systems can issue emergency safety prompts on-site along with traffic safety and road administration vehicles. Portable devices can also be carried by staff to the site to issue intense sound warnings.

## Solutions of Acoustic Precaution Technologies and Equipment

The intelligent intense sound early warning system for traffic safety can independently issue emergency safety prompts for sections with bad weather, avoiding the occurrence of accidents.



Rain and foggy weather severely impairs the vision of drivers and passengers. Likewise, snowy and icy weather leads to icy road surfaces. Without remote warning and command measures, the probability of traffic accidents is extremely high.

04

05

Traditional sound amplification equipment generally emits spherical sound wave. On expressway sections close to residential areas, the sound often spills over into the residential areas, causing noise interference to local residents.



## Solutions of Acoustic Precaution Technologies and Equipment

Directional narrow-angle sound amplification technology ensures that the audio transmitted by the sound intensifiers can be confined within a specific lane, without sound spillover, misdirection, or disturbance to residents.

On May 1st, 2024, a road collapse accident occurred on the Meizhou-Dapu Expressway in Guangdong Province, resulting in multiple casualties.



There was a lack of warning signs on dangerous road sections

On December 28th, 2022, due to a sudden heavy fog on the Zhengxin Yellow River Bridge, multiple traffic accidents involving multiple vehicles colliding with each other took place.



Drivers' vision was blocked in rainy and foggy weather

On December 16, 2022, multiple vehicles rear-end collisions occurred in the Yunzhongshan Tunnel on the Cangyu Expressway in Shanxi Province, resulting in multiple deaths.



There was no safety warnings inside the tunnel

On April 26, 2024, a car rear-ended a watering truck that was working on the expressway section in Xia County, Yuncheng City, Shanxi Province, and then caught fire and exploded.

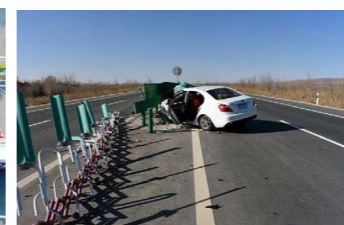


There was a lack of safety warnings at the road maintenance site

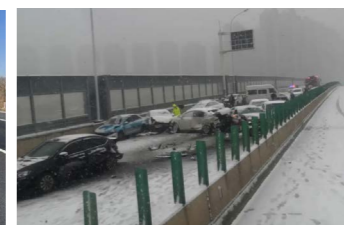
## MORE ACCIDENT TYPES:



Secondary accidents occurred due to the lack of safety reminders at the scene of traffic accident handling



Traffic accidents caused by fatigued drivers and lack of safety warnings



Traffic accidents caused by the lack of safety reminders in icy and snowy weather



When accidents involving hazardous chemical vehicles occurred, it is necessary to evacuate the surrounding areas.

# INTELLIGENT INTENSE SOUND WARNING SYSTEM FOR TRAFFIC SAFETY

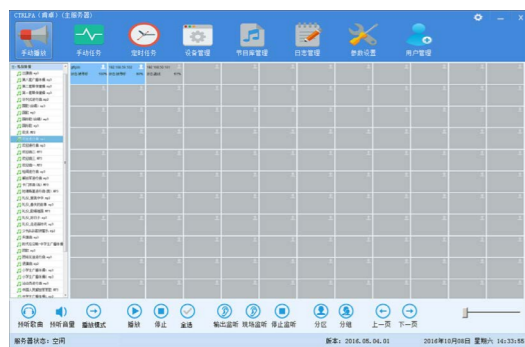


## CTRL8700

### IP BROADCAST SERVER SOFTWARE

#### PRODUCT FEATURES

- ▶ It is used by traffic road management units to establish a traffic safety control platform in the management center to provide safety warning prompts for the entire road section.
- ▶ Digital Public Address System: Fully digital transmission, multi-network integration, with a professional interface design.
- ▶ Sub-control and Interaction Functions: A broadcast matrix can be set up, supporting an unlimited number of zones, and the zones and groups can be combined arbitrarily.
- ▶ Scheduled Programming and Zone Monitoring: The system automatically plays content according to pre-programmed procedures to achieve automatic operation.
- ▶ Remote Control and Priority Management: The priority level of sound sources can be set according to actual requirements.
- ▶ Forced Insertion Paging and Intercom: The network intelligent paging station can page any zone, and two paging stations can have an intercom.
- ▶ It supports device online and offline notifications and log viewing functions, allowing the viewing of device operation and running status.
- ▶ It supports dongle verification. When the main server fails, it can temporarily run on the backup server.

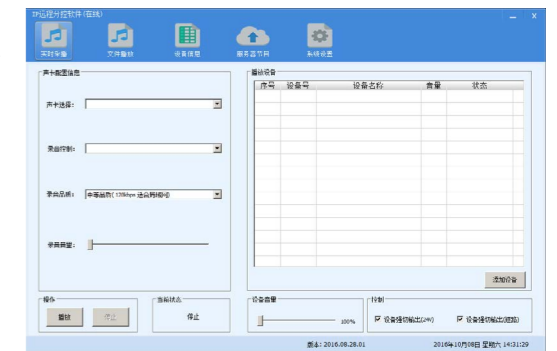


## CTRL8600

### NETWORKED REMOTE SUB-CONTROL SOFTWARE

#### PRODUCT FEATURES

- ▶ It is used in sub-control centers to receive and release the early warning and command information from the management center. It can independently manage and control the intense sound warning systems on the road sections within the scope of authority of the current level unit.
- ▶ It has the authority to remotely operate the main control system to achieve functions such as control, detection, and management of the program library of the main server.
- ▶ The interface displays all the authorized zones and their statuses.
- ▶ It can remotely control the zones within the operation authority to play audio programs.
- ▶ It can upload local audio programs to the networked broadcast server.
- ▶ It requires a username and password to log in. Different usernames have different permissions after logging in, which is safe and reliable.
- ▶ It supports the function of monitoring any zone.
- ▶ It supports logging in to the server via domain names.



## CTRL8400-APK

### NETWORK REMOTE MOBILE CONTROL SOFTWARE

#### PRODUCT FEATURES

- ▶ It is installed on the mobile phones of management personnel, enabling them to control the intense sound warning systems on the road sections within their authority scope and release information at any time.
- ▶ It has the authority to remotely operate the main control system to achieve control and detection functions.
- ▶ The interface can display all the authorized zones and their statuses.
- ▶ It can remotely control the zones within the operation authority to play the programs from the server and conduct voice paging.
- ▶ It requires a username and password to log in. Different usernames have different permissions after logging in, which is safe and reliable.
- ▶ It supports the function of monitoring any zone.
- ▶ It supports logging in to the server via domain names.



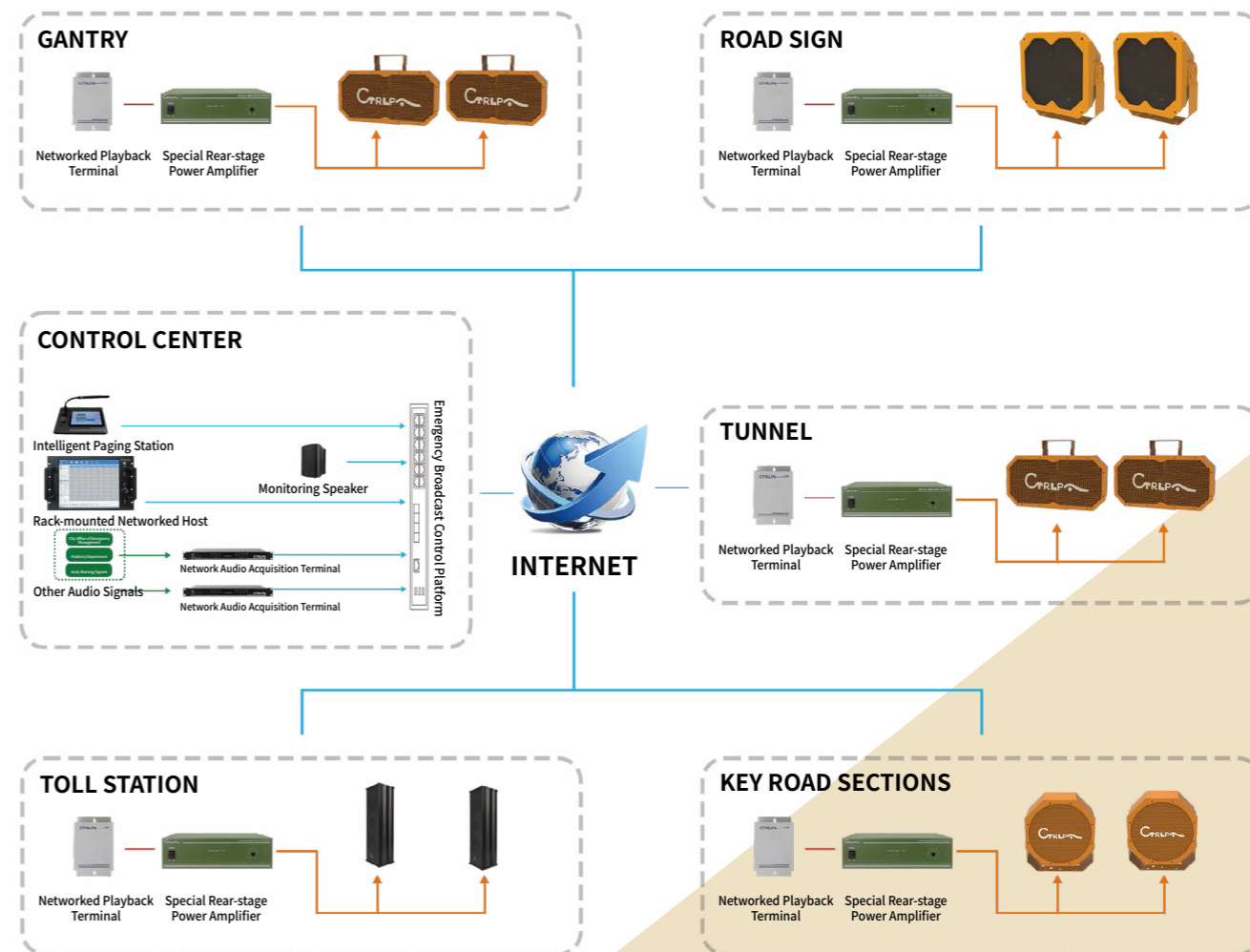
## NETWORKED INTELLIGENT PAGING STATION

### PRODUCT FEATURES

- ▶ It can release voice messages to the intense sound early warning systems on road sections within the scope of authority in real time.
- ▶ It is equipped with a 7-inch high-definition capacitance touch screen.
- ▶ It can conduct paging and intercom for zones with operation authority, and supports the real-time saving of speech recordings.
- ▶ It can access external audio, realize the expansion of the local system, and support playing audio sources from U disks/TFT cards.
- ▶ It can remotely control other devices and view surveillance images in real time.
- ▶ It can monitor the output audio sources of intercoms and other devices as well as the on-site environmental sounds.
- ▶ It is equipped with manual shortcut buttons, which are convenient for quick paging in emergencies and supports a one-key alarm button for the whole area.
- ▶ It has user password and permission management, which is safe and reliable.



### TOPOLOGY DIAGRAM(Solutions For Each Section)



# TRAFFIC SAFETY INTENSE SOUND WARNING AND COMMAND EQUIPMENT

## JT4120A

### VEHICLE-MOUNTED INTELLIGENT WARNING AMPLIFIER (WITH AUTOMATIC TRIGGER)

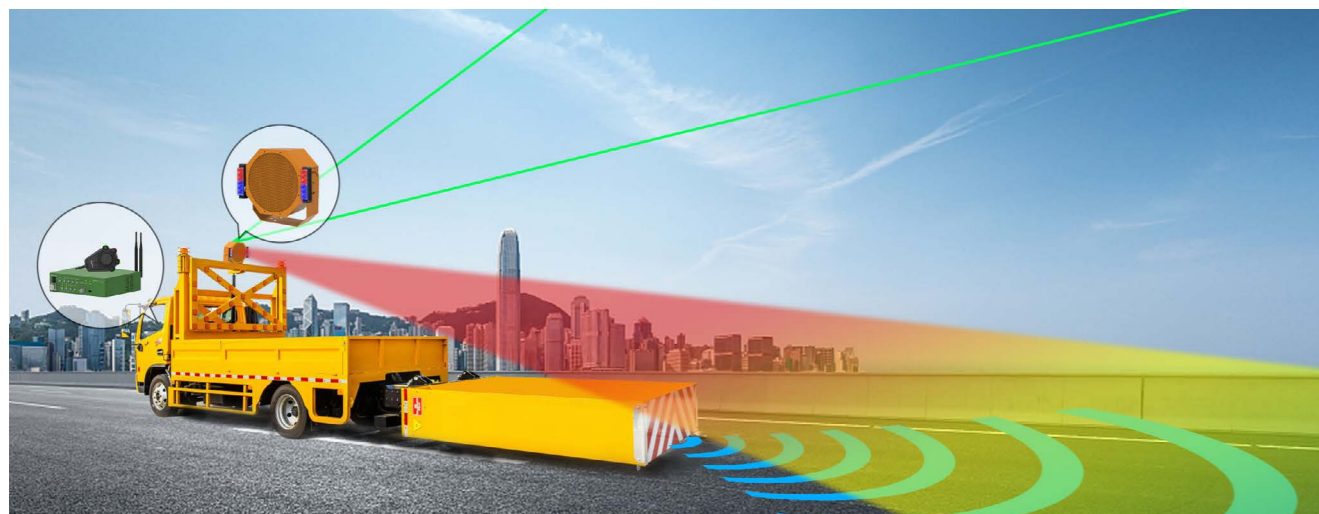
#### PRODUCT FEATURES

- ▶ The order of priority for audio sources is microphone input, MP3, line input.
- ▶ It has an automatic trigger playback function and can automatically play specified program files.
- ▶ It can switch between "automatic" and "manual" usage modes.
- ▶ The system has built-in warning audio sources and can connect to external audio signals.
- ▶ It is equipped with two power supply outputs designed for connecting laser devices, and allows for switching laser irradiation modes.
- ▶ It is equipped with one power supply output designed for connecting red-and-blue strobe warning lights, and allows for controlling the light.
- ▶ It can be optionally equipped with a positioning function and can use 4G or satellite networks to associate with the background system to locate the current work site.
- ▶ It has multiple status indicator lights for power, signal, protection, etc..



#### PRODUCT SPECIFICATIONS

MODEL	JT4120A
Output Power	500W
Frequency Response	150Hz-14kHz
Input Method	Unbalanced Input
Maximum Output Amplitude	100V
Total Harmonic Distortion	< 1% @ 1kHz(1/3 Power)
Signal-to-Noise Ratio	≥ 85dB
Working Temperature	-20°C ~+55°C
Power Supply Method	DC12V
Dimensions(L×W×H)	190×450×73mm
Weight	3.4 kg



## JT638

### VEHICLE-MOUNTED MULTIFUNCTIONAL WARNING POWER AMPLIFIER

#### PRODUCT FEATURES

- ▶ Powered by DC24V direct current, and can be customized for 12V or 220V.
- ▶ With 100V constant voltage output, the maximum output power is 500W, and 4-8Ω constant resistance output can be customized.
- ▶ Equipped with LCD liquid crystal screen for display, and supports playback via USB, SD card and Bluetooth.
- ▶ It has audio sources for public security, dispersal, fire fighting, ambulance and escort siren.
- ▶ The handheld megaphone has a one-key mute function.
- ▶ The handheld megaphone has a first priority. When the handheld device cannot be connected and controlled, an emergency microphone can be inserted for direct hailing.
- ▶ Total volume control; individual volume control for the microphone; treble and bass tone control.
- ▶ It is designed with protection against electrical circuit surge and automatic intelligent protection against overload.
- ▶ It features a simple exterior design, stable performance and sufficient power.



#### PRODUCT SPECIFICATIONS

MODEL	JT638
Output Power	500W
Frequency Response	150Hz-14kHz
Output Method	100V Constant Voltage Output
Input Method	MIC(Unbalanced),AUX(Unbalanced)
Total Harmonic Distortion	≤ 1% @ 1kHz(1/3 Power)
Signal-to-Noise Ratio	70dB(MIC); 80dB(AUX)
Tone	Bass: ±10dB@100Hz
Treble	±10dB@10kHz
Power Consumption	650W
Power Supply Methods	AC220 ~ 240V/50Hz
Dimensions(L×W×H)	300×198×65mm(With Drawer Handle)
Dimensions(L×W×H)	260×198×65mm(Without Drawer Handle)
Weight	3.2kg

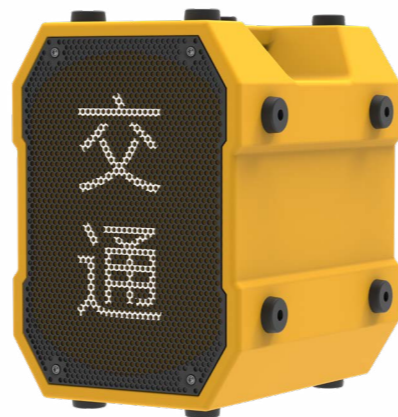
# INTELLIGENT WARNING PORTABLE SOUND INTENSIFIER

JT520

## INTELLIGENT WARNING SINGLE-CARRY INTENSE SOUND COMMAND SYSTEM

### PRODUCT FEATURES

- ▶ Applicable to scenarios such as intense sound warning and command at traffic accident scenes, traffic order guidance and control, and on-site command for road maintenance.
- ▶ Built-in large-capacity lithium battery, allowing handheld operation or placement at a fixed location for operation.
- ▶ The order of priority for audio sources is microphone input, MP3, line input.
- ▶ It has an automatic trigger playback function by linking to camera detection and can automatically play specified program files.
- ▶ It can switch between "automatic" and "manual" usage modes.
- ▶ The system has built-in warning audio sources and can connect to external audio signals.
- ▶ It is equipped with one power supply output designed for connecting laser device, and allows for 3 modes controlling.
- ▶ It is equipped with one power supply output designed for connecting red-and-blue strobe warning lights, and allows for controlling the light.
- ▶ Equipped with solar charging function to extend outdoor operation time.
- ▶ It has a power status indicator light, making the power level clear at a glance.
- ▶ Charging methods: DC25.2V power charger, DC12V solar panel.



### PRODUCT SPECIFICATIONS

MODEL	JT520
Charging Methods	DC25.2V Power charger、DC12V Solar Panel
Rated Power	70W
Frequency Response	600Hz-6.8kHz
Peak Sound Pressure Level(@1m)	136dB±2dB
Directivity	16° @-3dB
Sound Transmission Distance	1000m
Battery Endurance Time	≥ 6h
Ingress Protection Grade	IP56
Maximum Dimensions(W×L×H)	239×297×329mm
Dimensions Excluding Aviation Plug and Machine Foot Pad(W×L×H)	220×285×310mm
Weight	5.5kg



### APPLICATION SCENARIOS



## CT7506 SIMPLE WALL-MOUNTED NETWORKED PLAYBACK TERMINAL



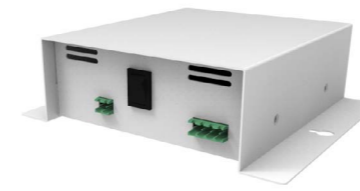
### PRODUCT FEATURES

- ▶ It is intelligently controlled by the master control system and can play audio programs and warning information from the master control system.
- ▶ High-quality and high-grade piano lacquer panel.
- ▶ High-efficiency digital power amplifier, enable to directly drive the speaker, designed with low power consumption.
- ▶ Built-in DSP sound effect processing chip, with a high voice transmission index and high-fidelity CD sound quality.
- ▶ One auxiliary audio input, one auxiliary audio output and one microphone input.
- ▶ Support output audio monitoring.
- ▶ Support connection to the server with domain name.
- ▶ Automatically switch to the backup server when the main server fails.

### PRODUCT SPECIFICATIONS

MODEL	CT7506
Output Power	2*25W(4ΩLoad)
Frequency Response	100Hz-20kHz
Power Supply Voltage Range	AC180V-240V/50Hz
Dimensions(L×W×H)	155×180×52mm
Weight	1kg

## CT7515 NETWORK CONTROL TERMINAL



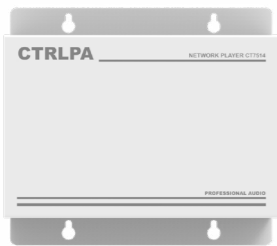
### PRODUCT FEATURES

- ▶ It is intelligently controlled by the master control system and can play audio programs and warning messages from the master control system.
- ▶ High-quality and high-grade piano lacquer panel.
- ▶ Built-in DSP sound effect processing chip, with a high voice transmission index and high-fidelity CD sound quality.
- ▶ Equipped with one auxiliary audio output.
- ▶ With one warning light control output and one laser control output.
- ▶ Support on-site ambient sound monitoring and output audio monitoring.
- ▶ Support the electric quantity monitoring of DC24V power supply (real-time electric quantity monitoring for photovoltaic systems).
- ▶ Support connection to the server with domain name.
- ▶ Automatically switch to the backup server when the main server fails.

### PRODUCT SPECIFICATIONS

MODEL	CT7515
Frequency Response	300Hz-15kHz
Output Voltage(1)	50W(DC24V)
Output Voltage(2)	50W(DC24V)
Power Supply Method	DC24V
Dimensions(L×W×H)	180×155×52mm
Weight	0.8kg

## CT7514 NETWORKED PLAYBACK TERMINAL



### PRODUCT FEATURES

- ▶ It is intelligently controlled by the master control system and can play audio programs and warning information from the master control system.
- ▶ High-quality and high-grade piano lacquer panel.
- ▶ High-efficiency digital power amplifier, enable to directly drive the speaker, designed with low power consumption.
- ▶ Built-in DSP sound effect processing chip, with a high voice transmission index and high-fidelity CD sound quality.
- ▶ One auxiliary audio input, one auxiliary audio output and one microphone input.
- ▶ Support output audio monitoring.
- ▶ Support connection to the server with domain name.
- ▶ Automatically switch to the backup server when the main server fails.

### PRODUCT SPECIFICATIONS

MODEL	CT7514
Output Power	2*70W(4ΩLoad)
Frequency Response	100Hz-20kHz
Power Supply Voltage Range	180V-240V/50Hz
Dimensions(L×W×H)	245×231×56mm
Weight	1.3kg

## JG1806CS/JG1812CS/JG1825CS/JG1845CS/JG1865CS

### SPECIAL REAR-STAGE POWER AMPLIFIER



### PRODUCT FEATURES

- ▶ Powered by AC220V alternating current. 100V constant voltage output. Different power amplifier models can be selected according to different requirements. The maximum output power is 650W.
- ▶ One AUX input, one line output; Total volume is controllable. It is designed with protection against electrical voltage surge during startup and protection against background noise disturbing.
- ▶ Automatic intelligent protection function against overload. The appearance design is simple, and it has stable performance and sufficient power.

### PRODUCT SPECIFICATIONS

MODEL	JG1806CS	JG1812CS	JG1825CS	JG1845CS	JG1865CS
Rated Power	60W	120W	250W	450W	650W
Output Method	100VConstant Voltage Output				
Input Method	AUX(Unbalanced)				
Frequency Response	80Hz-18kHz				
Total Harmonic Distortion	≤ 1% @ 1kHz(1/3 Power)				
Signal-to-Noise Ratio	80dB				
Protection	Overheating, Overload, Over-voltage, Under-voltage				
Power Supply Method	AC220V/50Hz				
Dimensions(L×W×H)	260×228×72mm				
Weight	2.8kg	2.8kg	2.8kg	2.8kg	2.8kg

## JT47HD DIRECTIONAL WARNING SOUND INTENSIFIER



### PRODUCT FEATURES

- ▶ It is applicable to scenarios such as gantries, road signs, and tunnels on traffic roads, and is used for remote intense sound early warning for traffic safety, traffic order guidance, and on-site command and handling of incidents.
- ▶ It is also suitable for vehicle-mounted installation on various traffic safety management vehicles such as crash cushion vehicles, road maintenance vehicles, and road administration vehicles, and is used for perimeter warning and on-site command at various traffic accident scenes and road maintenance sites.
- ▶ All-weather design. The outer casing is made of special steel, with strong weather resistance and high anti-riot rating.
- ▶ The sound transmission distance can reach 1.5 kilometers.

### PRODUCT SPECIFICATIONS

MODEL	JT47HD
Rated Power	150W
Frequency Response	500Hz-8kHz
Peak Sound Pressure Level(@1m)	145dB±2dB
Directivity	10° @-3dB
Sound Transmission Distance(in open areas)	1500m
Dimensions(L×W×H)	544×238×367mm
Weight	17.5kg
Ingress Protection Grade	IP56
Installation Method	Adjustable at Multiple Angles

## JT46HD DIRECTIONAL WARNING SOUND INTENSIFIER



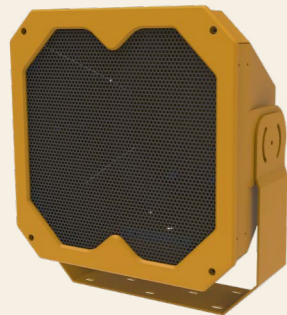
### PRODUCT FEATURES

- ▶ It is applicable to scenarios such as gantries, road signs, and tunnels on traffic roads, and is used for remote intense sound early warning for traffic safety, traffic order guidance, and on-site command and handling of incidents.
- ▶ It is also suitable for vehicle-mounted installation on various traffic safety management vehicles such as crash cushion vehicles, road maintenance vehicles, and road administration vehicles, and is used for perimeter warning and on-site command at various traffic accident scenes and road maintenance sites.
- ▶ All-weather design. The outer casing is made of aluminum alloy, which is lightweight, high-strength, and has super hardness and high anti-corrosion rating.
- ▶ The device can be adjusted in angle, with a downward inclination of 15° and an upward elevation of 60°.

### PRODUCT SPECIFICATIONS

MODEL	JT46HD
Rated Power	80W
Frequency Response	400Hz-11kHz
Peak Sound Pressure Level(@1m)	139dB±2dB
Directivity	15° @-3dB
Sound Transmission Distance(in open areas)	1000m
Dimensions(L×W×H)	250×179×292mm
Weight	8kg
Ingress Protection Grade	IP56

## JT12HD-D DIRECTIONAL WARNING SOUND INTENSIFIER



### PRODUCT FEATURES

- ▶ It is applicable to scenarios such as gantries, road signs, and tunnels on traffic roads, and is used for remote intense sound early warning for traffic safety, traffic order guidance, and on-site command and handling of incidents.
- ▶ It is also suitable for vehicle-mounted installation on various traffic safety management vehicles such as crash cushion vehicles, road maintenance vehicles, and road administration vehicles, and is used for perimeter warning and on-site command at various traffic accident scenes and road maintenance sites.
- ▶ All-weather design. The outer casing is made of special steel, with strong weather resistance and high anti-riot rating.
- ▶ It has relatively strong sound directivity characteristics.

### PRODUCT SPECIFICATIONS

MODEL	JT12HD-D
Rated Power	150W
Frequency Response	450Hz-4.8kHz
Peak Sound Pressure Level(@1m)	144dB±2dB
Directivity	12° @-3dB
Sound Transmission Distance(in open areas)	1500m
Dimensions(L×W×H)	241×367×418mm
Weight	11.6kg

## JT26HD DIRECTIONAL WARNING SOUND INTENSIFIER



### PRODUCT FEATURES

- ▶ It is applicable to scenarios such as gantries, road signs, and tunnels on traffic roads, and is used for remote intense sound early warning for traffic safety, traffic order guidance, and on-site command and handling of incidents.
- ▶ It is also suitable for vehicle-mounted installation on various traffic safety management vehicles such as crash cushion vehicles, road maintenance vehicles, and road administration vehicles, and is used for perimeter warning and on-site command at various traffic accident scenes and road maintenance sites.
- ▶ All-weather design. The outer casing is made of special steel, which is lightweight, high-strength, and has super hardness and high anti-corrosion rating.
- ▶ It can be fixed with an adjustable angle bracket.

### PRODUCT SPECIFICATIONS

MODEL	JT26HD
Rated Power	60W
Frequency Response	800Hz-5.6kHz
Peak Sound Pressure Level(@1m)	138dB±2dB
Directivity	25° @-3dB
Sound Transmission Distance(in open areas)	1000m
Dimensions(L×W×H)	200×150×170mm
Weight	4.5kg

# APPLICATION CASES

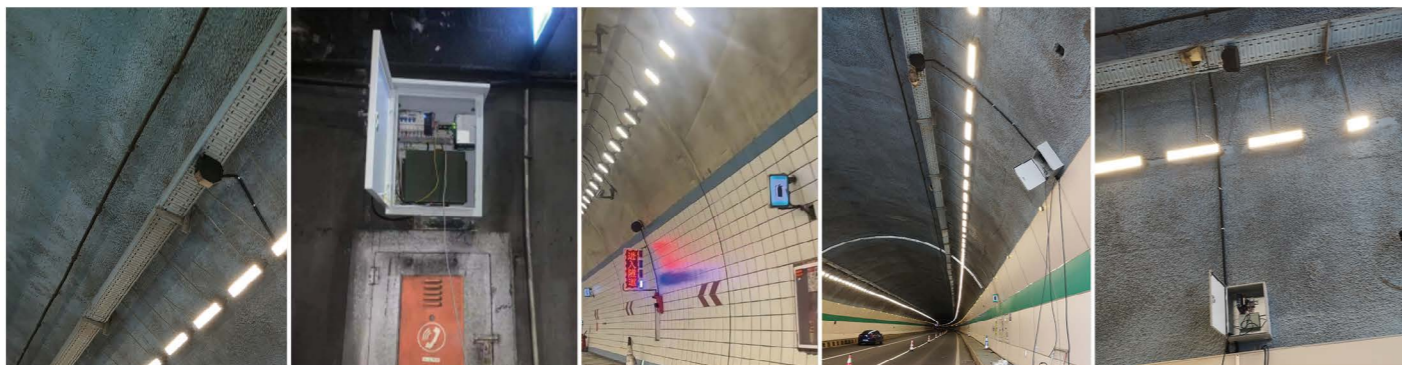
## Safety Management and Control of the Hong Kong-Zhuhai-Macao Bridge



## Remote Safety Warning for Roadways



## Safety Warning Inside and Outside Tunnels



# APPLICATION CASES

## Vehicle-mounted Devices for Traffic Law Enforcement Vehicles



## Portable Intense Sound Command System for Mobile Commanding

